

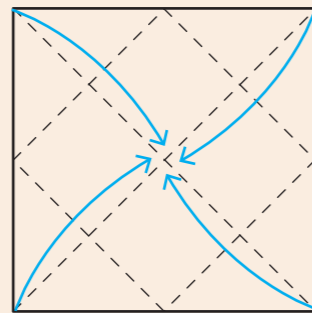
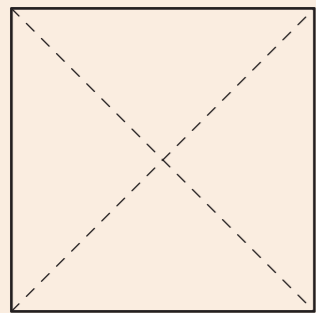
How To Make a Masu Box

You will need: A square piece of paper (coloured on one side)

Method:

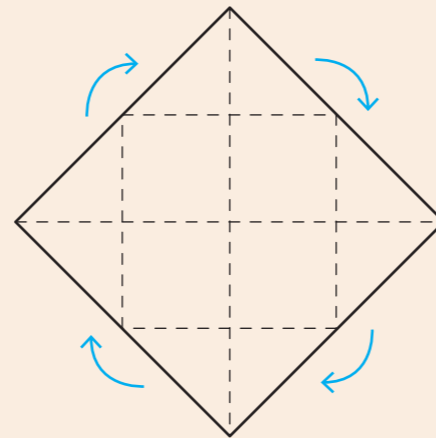
Step 1:

Start with white side up. Fold and unfold diagonals. Then fold the four corners to the centre and unfold.



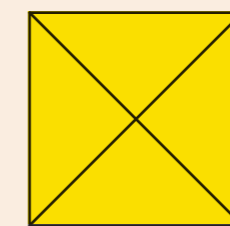
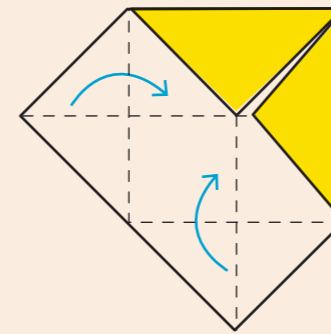
Step 2:

Turn paper 45 degrees.



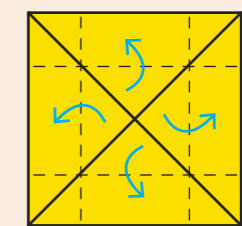
Step 3:

Fold all pointed sides towards the inside.



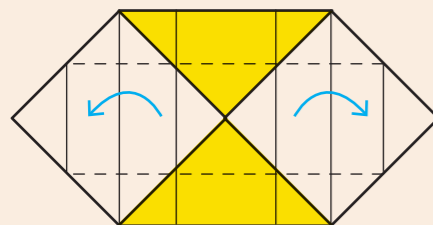
Step 4:

Fold top edges and unfold.



Step 5:

Unfold two side points. Then fold on existing creases.



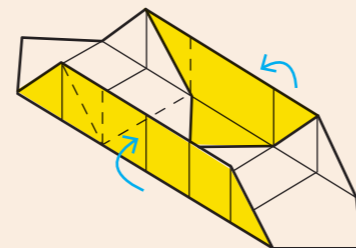
Step 6:

Fold and unfold on diagonals.



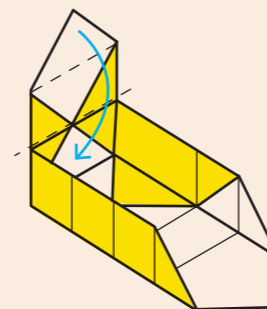
Step 7:

Lift both sides to 90 degrees so they stand up.



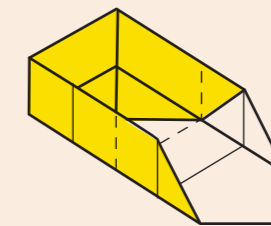
Step 8:

Lift the left point upwards. Then fold the point down into the box and press the point to the centre.



Step 9:

Repeat step 8 at other end.



Step 10:

Completed Masu Box.

