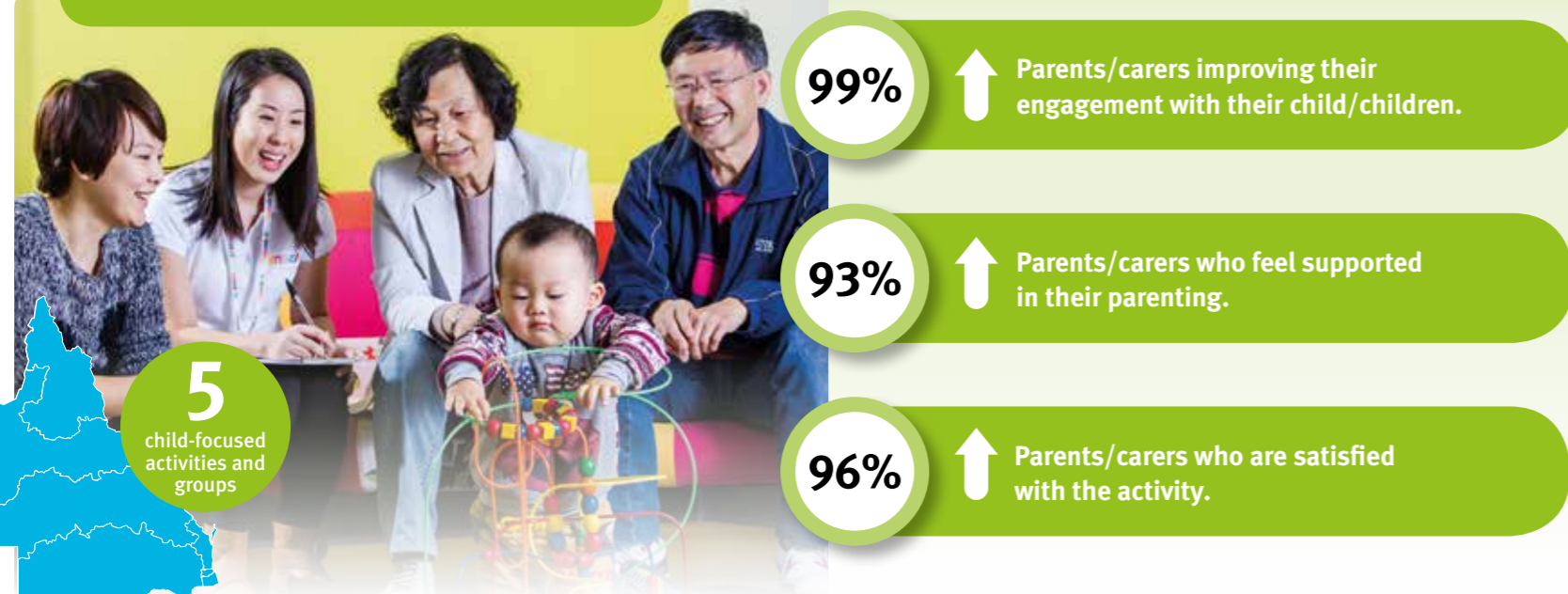


Child-focused Activities and Groups Funding Scorecard

January – June 2019

To deliver activities that aim to support child learning and development.

Outcomes for children and families



Story behind the data

Supporting Families

Families who have participated in Child-focused Activities and Groups (CFAG) report feeling more confident in their parenting skills, have observed positive changes in their child's behaviour and generally feel more comfortable and connected in the community.

An increased focus on regular, holistic and respectful engagement between parents and carers, children and workers has supported families to feel comfortable and better able to participate in programs and activities.

Understanding child development

Services are tailoring their child focused activities to include evidence-based programs that focus on quality early learning, encouraging more positive interactions between child and parent/carer while increasing parenting understanding and confidence. Services are delivering activities that are also easy to replicate at home, promoting continuous early developmental learning through playful connection. Other successful strategies to ensure parents/carers and their children are building attachment and positive engagement includes, but is not limited to:

- consistent delivery of targeted and age appropriate playgroups including mobile and outreach service models;

- parent resource libraries and organised visits with specialist support services;
- evidence-based and culturally appropriate parenting programs; and
- transition to school focused playgroups held on-site at local schools.

Flexible programs

Services are creating enriched supported playgroup models that are flexible and responsive to the changing and varied needs of children and their parents/carers. Many CFAG services report they are providing mobile playgroups that meet families where they are: on remote stations, in parks, at schools, or in other meaningful community places. Partnerships with local support organisations are also helping deliver responsive information sessions, access to services or specialists through playgroup, and personalised care plans. Services are creating flexible, responsive programs through ongoing consultation with children and families. Services report the greatest challenge to flexible delivery is having the time to establish trusting and two way relationships and ensuring their practice is consistently strengths based.

Transitions to school and kindy

Common to all CFAG services during this period was their work in supporting children to build their social, emotional and physical development for lifelong wellbeing and to support positive transitions into kindy and school. Some CFAG activities operate on school sites and encourage children to explore and experience supported play activities, with their families in the school environment, connecting to staff and beginning to understand and learn the rituals and routines of the school community.

Data

The data in the January to June 2019 CFAG Scorecard is inclusive of an annual reporting organisation that specifically supports and targets Aboriginal and Torres Strait Islander families in the Far North Queensland region. The inclusion of this data represents a 10% increase in the Indigenous children and families participating. Similarly, the addition of two new transitional playgroups under the Accessible Playgroup Initiative which specifically target large culturally diverse communities has directly increased the proportion of culturally and linguistically diverse children participating in this period by 7%.

Partnerships

- Health Services
- Schools
- Community support agencies
- Local Libraries
- Culturally and Linguistically Diverse support services
- Aged Care Facilities
- Domestic violence support agencies
- Parenting programs

Activities

- Supported Playgroup
- Home visiting
- Mobile and outreach playgroup
- School visiting and transition to Prep activities
- Parenting support programs including workshops and resource libraries
- Nutrition programs



Feedback and observations

What has been the most significant change –

'My daughter loves coming to playgroup, she was on her own so much I was concerned she would not connect with other children. To see her face light up when she comes to playgroup and how she now confidently engages with other children, I am so happy!'

'There has been a marked increase in the mother's understanding of her child's development. This has assisted the mother in building skills to respond appropriately to her daughter and her developmental needs. Both are much happier and more comfortable with each other too.'

80% ↓ Parents/carers report their child/children are benefitting from participating in the activity

Continuous Improvement

Child-focused Activities and Groups services will:

- continuously improve data and evidence collection tools
- access ongoing staff training and deliver supportive supervision processes
- use innovative and locally appropriate community engagement strategies
- advertise and promote services to increase engagement of diverse families
- ensure mobility, flexibility and/or transport support to ensure responsiveness and access
- foster positive partnerships with specialist services.

The Department of Education will work with services providing Child-focused Activities and Groups to:

- support the development of workforce capability and leadership capacity
- refine data collection methods and meet all reporting requirements
- assist with the use of data (including outcome data and the Australian Early Development Census) to continuously improve service delivery
- identify promotional opportunities
- identify learning and development opportunities.

Child-focused activities and groups snapshot



797 ↑ Total # of children participating

3% ↑ Children with disability

41% ↑ Aboriginal and/or Torres Strait Islander children

37% ↑ Culturally and Linguistically Diverse children



671 ↑ Total # of parents/carers participating

Disclaimer: Jan-Jun 2019 data is inclusive of one annual reporting organisation that does not appear in the mid-year report.