

Child-focused Activities and Groups Funding Scorecard

July 2018 – December 2018

To deliver activities that aim to support child learning and development.

Outcomes for children and families

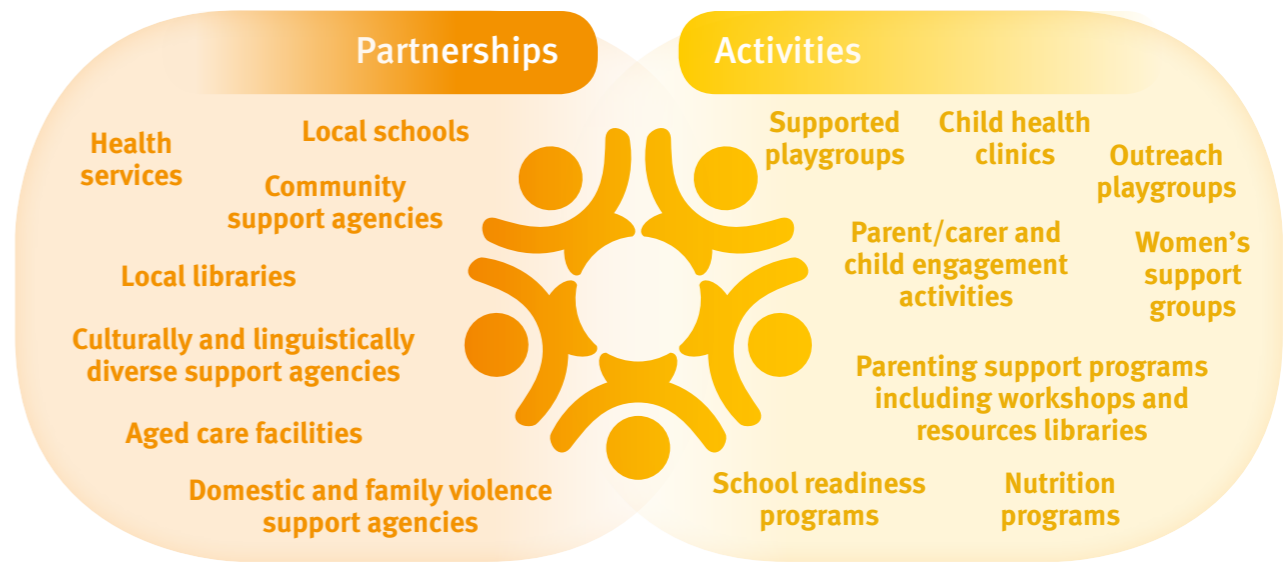


5
child-focused activities and groups

94% ↑ Parents/carers improving their engagement with their child/children.

88% ↓ Parents/carers who feel supported in their parenting.

94% ↓ Parents/carers who are satisfied with the activity.



Feedback and observations

What has been the most significant change –

'the facilitators provide an excellent service as well as providing information, support and sometimes "a shoulder to cry on!" Rural playgroup is often our only social outing for the month. Playgroup is an essential part of our community'

'without the opportunity of a safe environment I wouldn't have been able to feel comfortable to learn with my child'

97% ↓ Parents/carers report their child/children are benefitting from participating in the activity

Continuous Improvement

Services providing Child-Focused Activities and Groups will:

- identify priority community needs and determine which activities and strategies are most effective in their community
- improve reflective practice processes in order to plan ahead and program effectively
- increase advertising and promotional material
- continue to strengthen effective networks and partnerships with local services
- identify relevant professional development opportunities

The Department of Education will work with services providing Child-Focused Activities and Groups to:

- strengthen relationships with regional departmental officers
- facilitate networking activities and support services to identify potential partnerships
- identify promotional opportunities
- identify learning and development opportunities

Story behind the data

Participation

The number of families identifying as Aboriginal and/or Torres Strait Islander has increased during this reporting period which reflects the establishment of targeted playgroups specifically in Far North Queensland. Services are experiencing lower participation numbers in some areas due to lack of transport and are engaging other local services to explore shared transport options. Services are continuing to see casual attendance at playgroup and are working on ways to increase regular participation including planning event calendars in advance so that parents/carers are aware of upcoming activities. Services are using social media as a medium to share event calendars. Services are working with facilitators to improve secure relationships and surveying techniques with parents.

Child engagement activities

A number of services have attended professional development sessions on child development with a particular focus on attachment and parent/carer and child engagement. Services are implementing activities such as storytelling and reading, to foster stronger child and parent/carer interactions. A number of services have a parent resources library to encourage parents/carers to borrow books exploring different parenting strategies.

Partnerships

Services continue to focus on strengthening relationships with local early childhood services and schools to improve children's experiences of transitioning to school. This has included inviting teachers and principals to attend playgroups to meet families in an informal environment. Anecdotal evidence gathered by services shows that children who have attended their service have experienced a smoother transition to school. A number of services are working to increase effective partnerships to strengthen referral pathways particularly for families living in remote locations. They are attending community events in order to further engage with community and are creating new and more targeted promotional materials. Services have also fostered relationships with regional staff from the Department of Child Safety, Women and Youth to invite children to attend playgroups with support staff.

Disclaimer: 1 service has been excluded from this scorecard as the service agreement ended during the reporting period. 2 services were excluded from this scorecard as they report annually.

Integrated service delivery snapshot



783
Total # of children participating

2%
Children with disability

31%
Aboriginal and/or Torres Strait Islander children



592
Total # of parents/carers participating