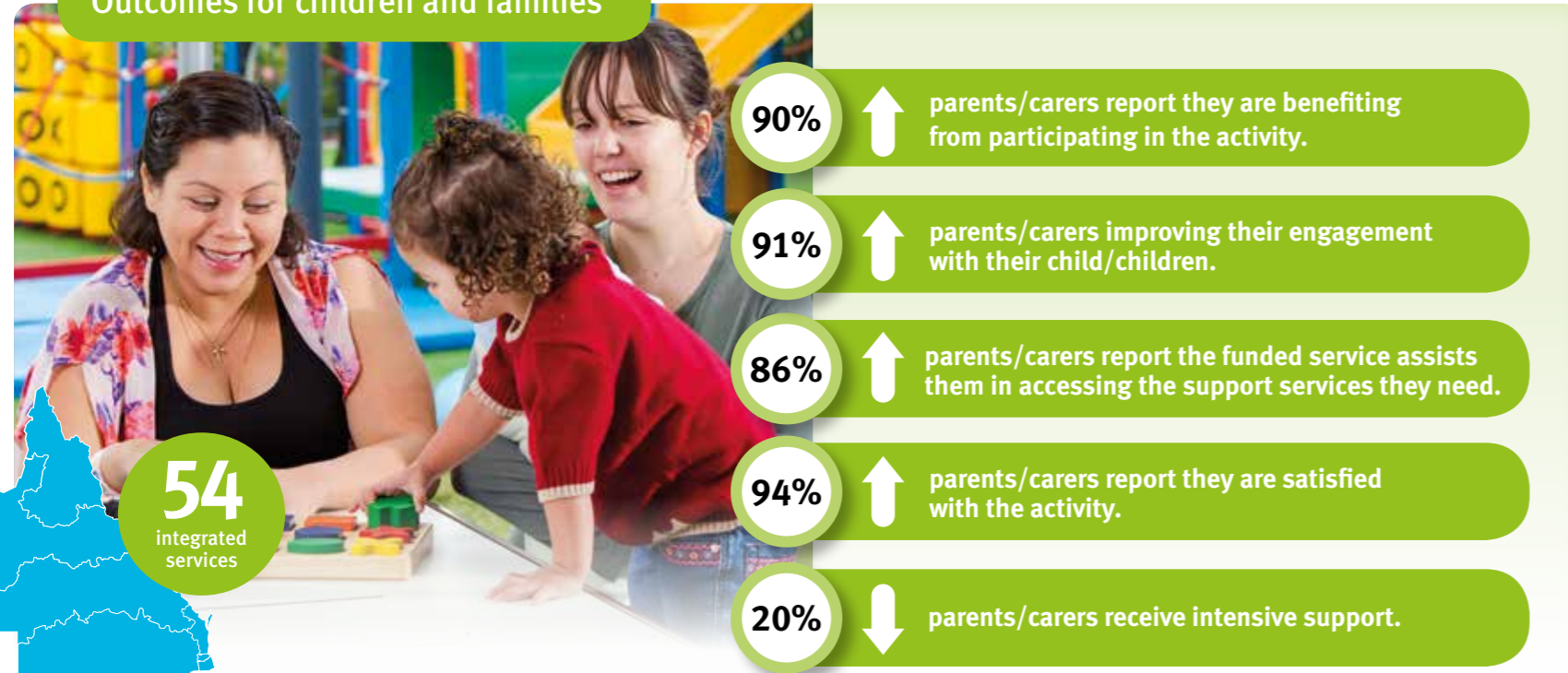


Integrated Service Delivery Funding Scorecard

July 2018 – December 2018

To support families wellbeing and children's development

Outcomes for children and families



Story behind the data

Data

A decrease in participation rates for children during this reporting period may be attributed to data from one Early Years Place not being included due to inaccuracies.

Effective Partnerships

Effective partnerships have enabled EYPs to use play-based and informal activities as platforms for multidisciplinary support and early childhood intervention services. EYPs partnered with health services to deliver playgroups and parenting programs that subsequently connected parents/carers and their children to health professionals, allied health clinics, child development and hearing checks and immunisation services. The integration of child, maternal and allied health services into both centre and outreach based activities supported access to universal child and family health services for parents/carers and their children.

Positive feedback from Prep teachers has also highlighted successful partnerships with schools and kindergartens to deliver transition activities has led to children improving pre-literacy, sharing and behavioural and social skills.

Parent/Carer Engagement

Engaging parents/carers in EYP activities continues to be a challenge due to lack of transport, the transient nature of some communities, inconsistency of service delivery in particular irregular scheduling of activities and a general lack of knowledge about the importance of the early years. EYPs have been able to address some of those factors by:

- experienced staff building rapport and trust with parents/carers and their children;
- targeting promotion of EYP activities through social media platforms;
- implementing regular timetables of activities to support more consistent service delivery; and
- delivering outreach activities into locations parents/carers are either already using or are easier to access.

Tailored Activities

EYPs have continued evaluating their activities through survey feedback and staff observations and are more effectively identifying the needs of parents/carers and their children. This process also provided the opportunity to identify challenges to engaging parents/carers and be more responsive and tailor activities that target their

specific needs. Examples of some successful tailored activities include:

- targeted social and emotional wellbeing programs for children;
- age appropriate early learning activities through playgroups with staff skilled in Abecedarian, Families as First Teachers and Parents as Teachers;
- culturally appropriate parenting programs; and
- family support delivered through home visiting programs.

An increase in parents/carers engaging with EYPs with complex issues including mental health, housing stress and substance abuse was reported during this period. EYPs responded by working closely with partner agencies to develop and deliver activities that focused on building resilience and capabilities of parents/carers which has increased their confidence, self-esteem and parenting skills.

A common challenge across the EYPs during this reporting period was the recruitment and retention of early years learning and development trained or experienced staff, particularly in rural and remote areas.

Partnerships

- Local schools and kindergartens
- Health services (general)
- Allied Health professionals
- Local councils
- Maternal and child health
- Community organisations
- Early childhood education and care services
- Local libraries

Activities

- Playgroup
- Parent programs
- Family and intensive support
- Hearing and child development checks
- Social and Emotional resilience programs
- Outreach and home visits
- Cultural activities and celebrations
- Immisation and health clinics
- Transition to school programs

Feedback and observations

What has been the most significant change –

“...The most significant change I have seen is that my child has gained really good social skills. He’s learning so much from the services here, bringing it home and learning more.”

“Combining both Children’s Week and an Early Childhood Expo allowed parents/carers to gain better knowledge of what services and schools were in the area.”

“Learning about attachment really inspired me to look for more information about the early years and how children grow and develop.”

93% ↑ parents/carers report their child/children are benefiting from participating in the activity

Continuous Improvement

Integrated services will:

- build on and strengthen existing and new partnerships to deliver early years learning, child development and school transition activities
- implement a consistent approach to service delivery including strategies to recruit and retain qualified staff
- continue to deliver evidence based early years learning and development activities
- promote the importance of early years learning and development within the EYPs and community.

The Department of Education will work with integrated services to:

- promote the EYP mentoring program, particularly to new EYP staff
- promote professional development opportunities including connecting EYPs to early years learning and development resources
- facilitate EYP networking opportunities both regionally and state wide.

Disclaimer: Survey sample is an average of 30% of target group across the funding category. Data from one service was not included.