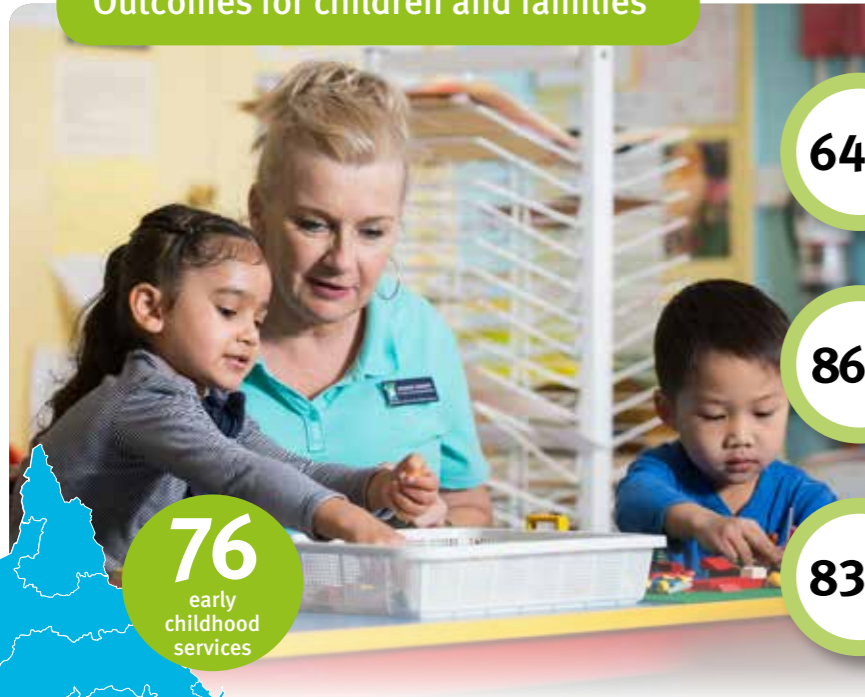


Early Childhood Education and Care Funding Scorecard July 2016 – June 2017

To provide access to support children's learning and development



Outcomes for children and families



76
early childhood services

64% children access service activities on a weekly basis.

86% children are participating and engaged.

83% parents/carers report being able to participate in employment, training and support activities because their child/children attend the activity.

Story behind the data

Transitions

Providing support for children to **successfully transition** from an early childhood service to formal schooling was identified as essential for their future success.

Services identified that **strong relationships** between early childhood education and care services, kindergartens and local schools and parents/carers **ensures children feel supported**.

Visits to kindergartens and schools, and familiarity with new staff helped children overcome any fears to ensure that they were 'kindy/school ready'.

Partnerships

Through partnerships with **child and maternal health and family support services**, early childhood education and care services have been able to provide better support for children and parents/carers.

Through partnerships, parents/carers have been able to **access immunisations, health checks and parenting programs**.

Parenting information on topics such as the importance of keeping children home when unwell, hand washing and nutrition has assisted parents/carers to achieve health outcomes for children.

Parental engagement and support

The engagement and education of parents/carers about the **importance of early childhood and play-based learning** continues to be valuable in improving outcomes for children. The hosting of open nights, barbeques and parent/carer teacher evenings are some of the strategies used to engage parents/carers in their child's learning.

Services are working to ensure they provide the highest quality care for children including informing parents/carers on the progress of their child, using reflective practice.

Learning and development

Children's learning and development is supported through the provision of a quality early childhood program and by educating parents/carers on what can help a child learn.

In addition to formal training of educators and support staff, services also advised that the **education of parents/carers about nutrition (healthy lunches), the importance of immunisations and general health** was also important to improve health outcomes for children.

Partnerships

- Local child and maternal health services
- Other early childhood services
- Local schools
- Family support services
- Sporting clubs

Activities

- Early childhood education and care
- Immunisations and health checks
- Nutrition and healthy eating
- Transition to school programs
- Parent support



Feedback and observations

What has been the most significant change –

"K loves the program and we are really pleased that he seems to have a good time. The support workers are always very good and I feel secure that he is in a safe environment where he is learning and involved with the program"

"L attends vacation care with her peers and workers she knows and we trust, in an environment that is familiar to her. It provides our family with great support as we juggle our jobs, other children and her need to spend social time with her friends"

77% parents/carers report their child/children are benefiting from participating in the activity

Continuous Improvement

Early Childhood Education and Care will:

- engage more with the local community through events and activities to promote the value of early childhood development and learning
- professional development of staff with the support of the early childhood services and or governing body
- continue to engage with partners to support children and their parents/carers in the local community
- develop strategies for data collection and surveying of parents/carers to measure outcomes.

The Department of Education and Training will work with ECEC to:

- support the development of workforce capability and leadership capacity
- support services to meet all reporting requirements
- identify strategies to support the delivery of quality services for parents/carers
- assist with the use of data (including outcome data and the Australian Early Development Census) to continuously improve service delivery
- support services to connect through partnerships and networking opportunities
- develop and strengthen partnerships with local child and maternal health and allied health providers.

14 ECEC services were not included in the data capture.

