

Child-focused Activities and Groups Funding Scorecard

July 2017 – December 2017

To deliver activities that aim to support child learning and development.

Outcomes for children and families

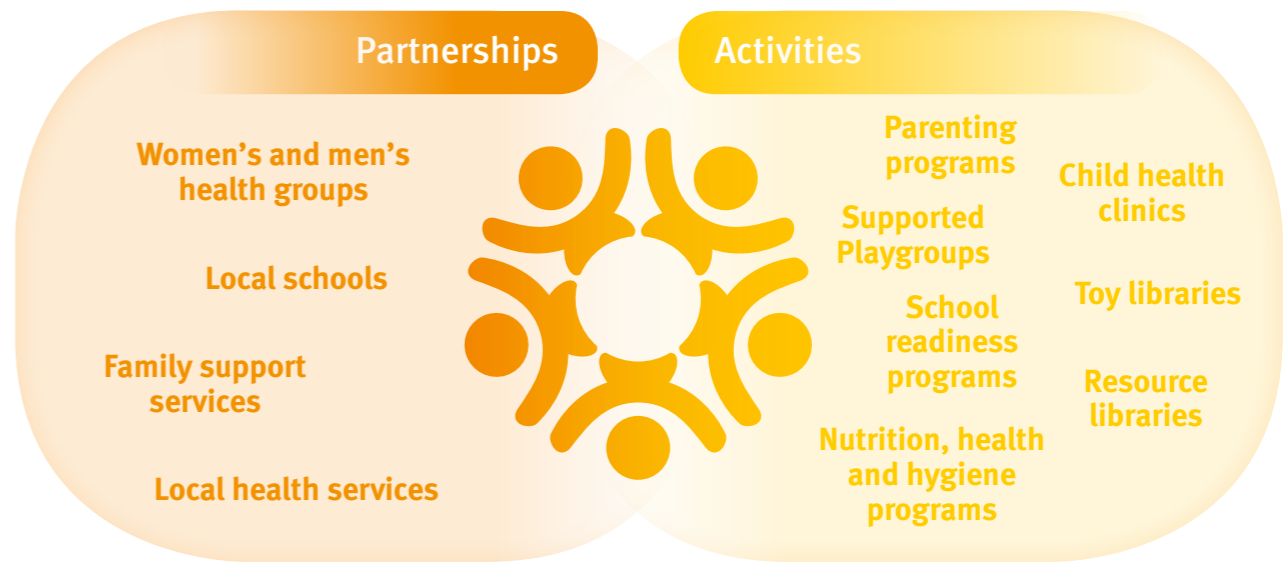


5 child-focused activities and groups

86% ↑ Parents/carers improving their engagement with their child/children

82% ↑ Parents/carers feel supported in their parenting

92% ↑ Parents/carers are satisfied with the activity



Feedback and observations

What has been the most significant change –

“Playgroup has allowed my daughter to blossom and develop into a creative and confident little girl. Planned activities and interaction with other young children in the area has challenged her to develop the skills she needs to confidently start kindy next year”

“We all have to pinch ourselves as to how lucky we are to have such a wonderful service”
“thank you for always providing such a beautiful outing for our kiddies and the mums”

89% ↑ Parents/carers report their child/children are benefiting from participating in the activity

Continuous Improvement

Services providing Child-focused Activities and Groups will:

- further develop understanding of performance reporting and establish better data collection methods to ensure data integrity
- continue to strengthen connections with community and ECEC services including family support services, health clinics, schools and neighbourhood centres
- build relationships with relevant government agencies and regional staff to provide more targeted assistance to remote and isolated families and communities.

The Department of Education will work with services providing Child-Focused Activities and Groups to:

- identify upcoming grant opportunities to support improvements in the quality of service delivery
- identify relevant training and professional development opportunities
- identify opportunities for developing networking opportunities across CFAG services and other EYS funding categories to improve service delivery.

Story behind the data

Data

In July 2016 a new reporting regime was introduced to Early Years Service funding. The regime focuses on the outcomes for children and families. Services under the Child-Focused Activities and Groups category are continuing to refine assessment processes and data collection methods to ensure data integrity. This has included the introduction of verbal surveying, anonymous surveying and online group surveying.

Participation and engagement

Increasing community awareness of activities and services is frequently a challenge for services, particularly in rural and remote settings where families are geographically isolated. Services are working to enhance the use of virtual communication, in particular using social networks to increase the exposure of their service and to raise awareness of their outreach capacity. New parents are responding to this change, connecting and participating more in activities and programs. Services are engaging with other local community organisations and groups to improve the

sense of trust in visiting or mobile services and this is also contributing to higher participation.

Health and wellbeing

Services are using practical and evidence based strategies and programs to support children’s health, wellbeing and early learning development. Interactive parenting programs support parents to identify their own strengths as well as opportunities to enhance their parenting capabilities. Health and nutrition seminars as well as play based and music therapy activities have been positive additions to playgroups, leading to connections and referrals for families into child health clinics and allied health services.

Parenting support

Families living in more remote geographical locations frequently feel isolated and lack social connectedness. Outreach and mobile playgroups have provided valuable and meaningful connections for these families who will often go a number of weeks without having any other interaction.

Services are working with parents to increase their early childhood development knowledge to build their capability and confidence in their parenting role.

Supported play and group activities model positive connection and communication between a child and their parent/carer. These activities build the capability of parents and carers to engage with their children during crucial developmental stages.

Partnerships

Services are continuing to improve their partnerships with Aboriginal and Torres Strait Islander services and communities as well as with other culturally and linguistically diverse community groups, members and organisations to improve outcomes for children.

Services are working to strengthen connections with early childhood education and care organisations as well as establishing relationships with local schools to support smoother transitions for children and their families on their early learning pathway.

6 month scorecard for period July 2017 – December 2017. 2 services have been excluded from this scorecard as they are required to report annually.



911 ↑

Total # of children participating (past 12 months)

3.4% ↑

Children with disability

26% –

Aboriginal and/or Torres Strait Islander children



921 ↑

Total # of parents/carers participating (past 12 months)