

Child-focused Activities and Groups Funding Scorecard

July 2016 – December 2016

To deliver activities that aim to support child learning and development.

Outcomes for children and families

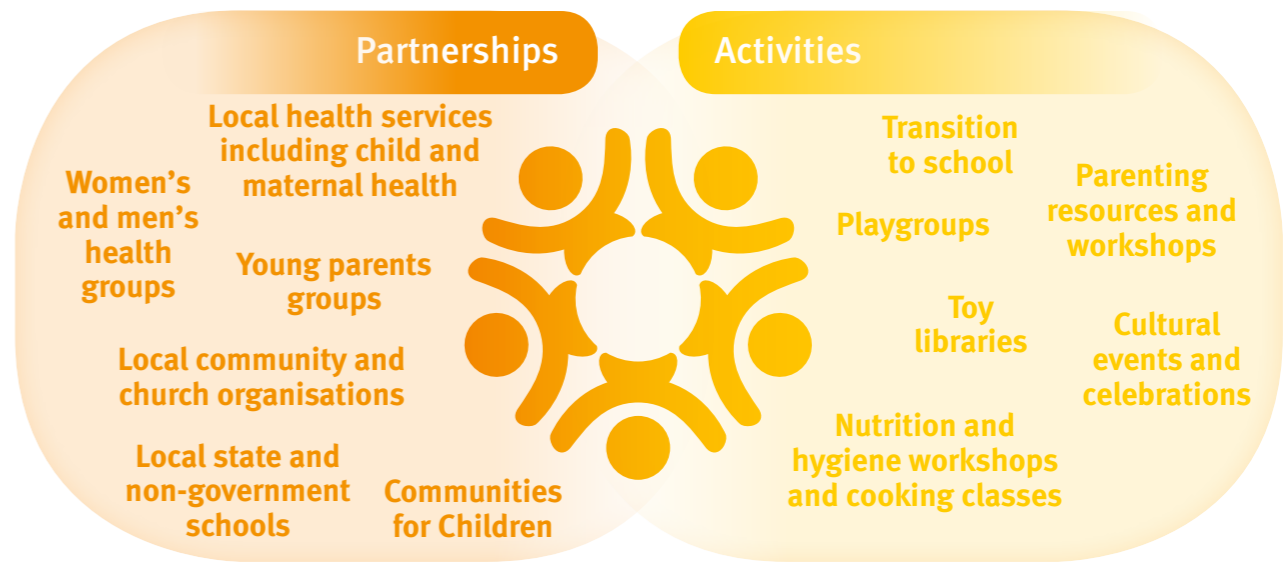


66% Parents/carers improving their engagement with their child/children

91% Parents/carers feel supported in their parenting

91% Parents/carers are satisfied with the activity

5 child-focused activities and groups



Parent feedback

What has been the most significant change –

"...playgroup is the only thing for my 4 year old in this community as we are 30 kms from the closest kindy and child care centre. Now that he goes to this playgroup-which is in the school-he sees the big kids and wants to be one of them. He's going to have no problem at all going to school here next year"

"The midwives visit our playgroup so we get to know them and trust them with other families around. Now we can easily go to the clinic to see them when we need to"

89% Parents/carers report their child/children are benefiting from participating in the activity

Story behind the data

What has worked?

Health and wellbeing
Activities are supporting **improvements in children's health and development** and establishing healthy parental and community connections, creating a sense of belonging.
Parents and children are **gaining access to child health** and allied health professional visits and participate in group activities.
Nutrition, hygiene and parenting are promoted and **modelled through playgroups**.

Parenting Support
Services often located in remote, rural and/or isolated communities providing access for **socially isolated parents and children**.
Creating strong **community engagement and secure relationships** with parents and carers lead to open communication and increased parental capabilities.
Parents and carers report that playgroups have been helpful in **building their understandings of early childhood development**.

Partnerships
Services have **strong relationships** with government departments, not for profit organisations and local community groups allowing for smoother referral processes and resource sharing.
Partnerships with local community groups in conjunction with **culturally informed practice** have contributed to higher participation of parents/carers and their children.
Services rely on staff who are **well connected in regional and remote locations** and are confident networkers. Playgroup facilitators are often local community members who develop new skills and build confidence by being involved in playgroups.

Participation and engagement
Playgroups specifically designed to support **Aboriginal and Torres Strait Islander families** have resulted in an additional 48 families and 65 children participating in local playgroups.
Services work to build trust and better connections with local families by delivering tailored programs and support.
Free transport is provided to families in remote locations to support their participation.

Continuous Improvement

The Department of Education will work with services providing Child Focused Activities and Groups to:

- build workforce capability
- provide Small Assistance Grants to support the viability, capability and quality of services
- embed a focus on outcomes and use of data to inform continuous improvement
- identify appropriate learning and development opportunities
- assist in establishing and improving connections within the region with both the public and private sector

Services delivering child-focused activities and groups will:

- attend and hold community and family events to increase engagement with communities and improve networks
- establish appropriate outreach/home visiting services to meet the needs of families with limited transport options
- develop and strengthen partnerships with schools and other community groups
- seek learning and development opportunities to build the capacity of their workforce



308 Total # of children participating

0.9% Children with disability

44% Aboriginal and/or Torres Strait Islander children



280 Total # of parents/carers participating