

Sector Support Funding Scorecard

July 2017 – June 2018

Increase the effectiveness of early childhood development services

Performance Measures



936

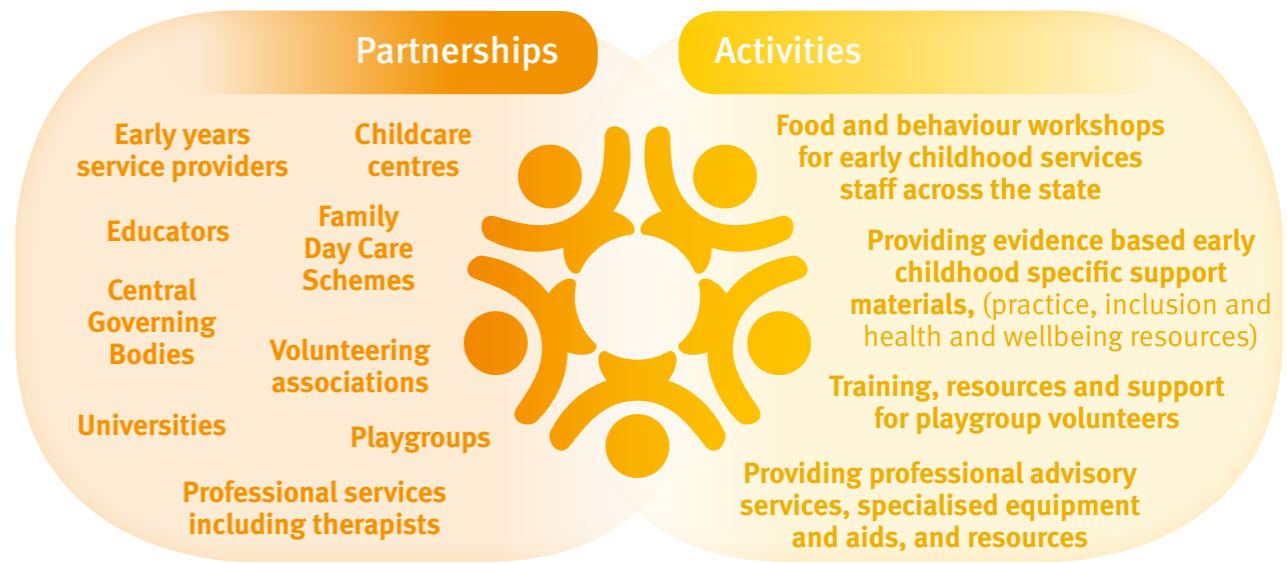


target group accessing the activities.

89%



target group report they are satisfied with the activity.



Feedback and observations

What has been the most significant change –

“The cut-out-table and the posture chair allows my child to participate and engage in a range of activities. My child can join his peers at meal times and other experiences in an inclusive way that is at an appropriate level with is peers.”

94%

report they are benefiting from participating in the activity

Story behind the data

Building workforce capability

Sector Support services are assisting the early childhood workforce by providing a broad range of creative and up to date resources, specialist support materials and professional development. Workers report that they are benefiting from the support as it helps them to keep pace with contemporary practices. This has also informed the implementation of targeted health and wellbeing initiatives in their centres and delivery of best practice creative activities focussing on child development.

Educators report they are benefiting from SERK assistance and are feeling empowered to enhance the learning environment for all children, in particular those with disability. They feel their capability in providing more inclusive practices has been enhanced which contributes to the children’s learning and wellbeing. The support provided is saving services time, leaving more time to better meet the children’s curriculum and developmental needs.

Partnerships

Services have focussed on developing stronger partnerships with ECEC services including kindergartens, long day care services, and playgroups. Additionally, services are developing strategies to better promote their activities by adopting new and varied communication techniques to reach both existing partners and those they would like to form relationships with in the future.

High staff turnover within ECEC regulated services has created a challenge in establishing secure and ongoing relationships.

Rural and remote

Sector Support services are ensuring rural and remote early years services have access to free quality ECEC evidence based professional development opportunities, support materials and early years practice, inclusion and health and wellbeing resources.

Training provided through Ready Together has focused on improving the knowledge of Integrated Service Delivery staff about early childhood and brain development, as well as strategies to engage parents/ carers with their child’s early learning. There has also been a strong emphasis on staff being able to apply these learnings to local service delivery.

Data includes 8 Sector Support Services: The QLD Children’s Services Library, Playgroup Queensland Volunteers Program, Inclusion Works, four Ready Together sites and NAQ Nutrition.

