

Sector Support Funding Scorecard

July 2018 – June 2019

Increase the effectiveness of early childhood development services

Outcomes for children and families



7
sector support organisations

438 ↓ target group accessing the activities.

96% ↑ target group report they are satisfied with the activity.

Story behind the data

What has worked?

Evidence-based practice

Sector Support services are providing a range of evidence-based practice resources, specialised equipment, advice and professional development to build the capability of the early childhood workforce. Focus practice areas included physical environments, child and brain development, inclusion, embedding Aboriginal and Torres Strait Islander perspectives and nutrition. Workers report they are benefiting from their access to contemporary information, which has been shared with families and embedded into activities across their organisations.

Advice provided by expert practitioners on inclusion equipment and strategies was used by educators to improve the quality of the learning environment and ensure children with additional needs could participate in a more positive way. Early years services staff shared knowledge gained from nutrition workshops with clients, for example the impact of squeeze pouches on children's oral health, taste and speech development. These workers report parents and carers are now more equipped to make food choices that support their child's health and development.

Tailored support

Sector Support services are gathering feedback to identify and tailor support to the diverse needs of early years service providers and clients. These processes also provided the opportunity to identify barriers to accessing support. Services have responded by offering more flexible workshop delivery, face to face visits and outreach to provide training in different communities across Queensland.

Services also ensured greater access for the rural and remote workforce through free borrowing of resources and post-paid delivery and return services, phone advice and access to information via the internet.

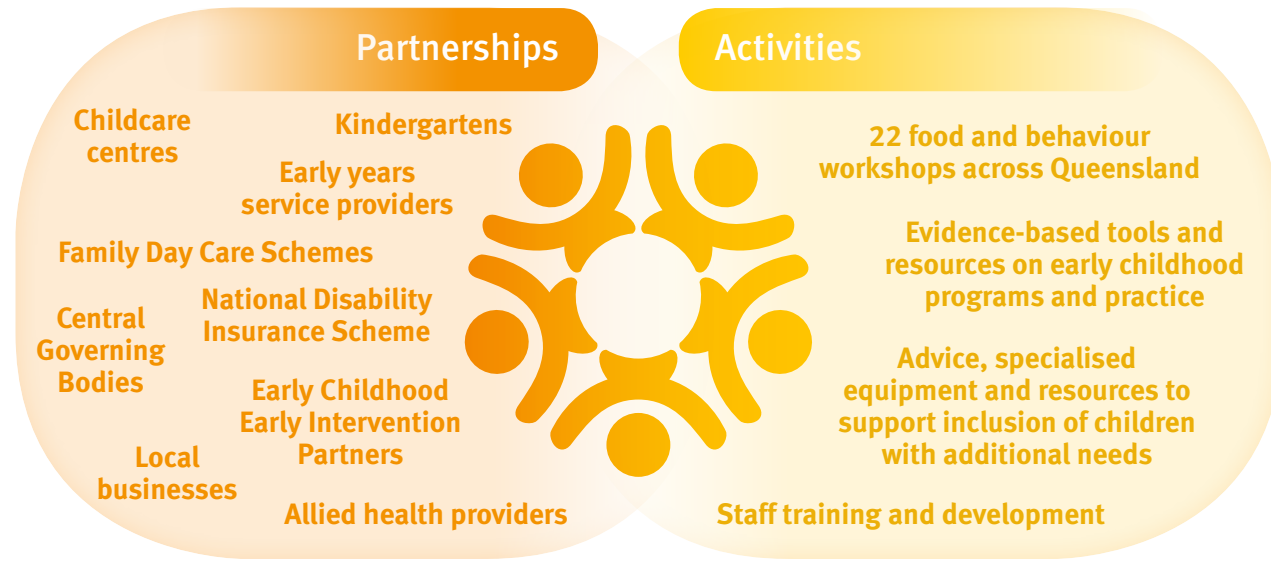
Although there has been a decrease in the number of services accessing sector support, there has been an increase in satisfaction, with 96 percent of services reporting they are satisfied with the activity.

Partnerships

There has been a continued focus on building and strengthening partnerships with early years services as well as peak organisations such as disability support providers and Central Governing Bodies.

The change in SERK provider resulted in some challenges when connecting with some partners and has had a short term impact on uptake of the service. In response to this re-education strategies have been developed to build awareness about the purpose and new structure of SERK.

Across the board Sector Support services are adopting new and varied communication techniques to better promote their activities, including dedicated websites with resources and information, e-newsletters and emails.



Feedback and observations

What has been the most significant change –

'The client increased their knowledge about including children within the autism spectrum and with visual impairment into playgroup settings'
Queensland Children's Services Library

'The site visit has developed relationships between the SERK team and the Kindergarten. Educator's capacity has increased with new strategies and knowledge of how to use equipment, resulting in increased participation by children'
KU Children's Services

'families feel less vulnerable at meal times and confident to persist with fussy eaters'
Nutrition Queensland

97% ↑
Parents/carers report their child/children are benefitting from participating in the activity

Continuous Improvement

- Sector Support services will:**
- use targeted promotion to expand the reach of services
 - continue to provide the sector with evidence-based resources, equipment, professional development and advice
 - improve survey and data collection methods to better identify and respond to the diverse needs of the sector.

- The Department of Education will work with services providing Sector Support to:**
- embed skills and knowledge gained through the Ready Together project into ongoing service delivery
 - identify and support the development of effective partnerships
 - facilitate links with early years services across Queensland.

Disclaimer: Sector Support includes Nutrition Australia Queensland, four Ready Together sites, Queensland Children's Services Library and Specialised Equipment and Resources for Kindergartens. Data for Ready Together is up until 31 December 2018 when site activity concluded.

Sector Support snapshot



438
Total # of target group participating



7
Sector Support organisations



Service delivery reach
State-wide

